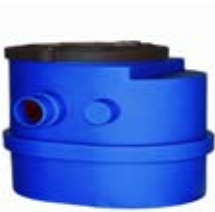




## SIMPLE POND SYSTEM

- No Limitations on your creative vision.
- No Fragile ecosystem to maintain.
- Operate only when desired.
- Can be placed away from water feature
- Minimal footprint in landscape.
- Requires much less digging.
- Reduces energy consumption.
- Reduces evaporation.
- Sturdy, durable, yet light weight material.

### T40F- Filter Tank



- 40 lbs. Dimensions: L: 29", W: 31.75", H: 24"
- A 4" intake port handles flow rates up to 80 GPM (4,800 GPH)
- Provides 20 gallons of water-in-motion reserve @ 9" residual water depth
- Large pumping chamber, bolt down integrated lid system, convenient 13" diameter filter access
- Removable filter carriage
- Front & Back Discharge Ports for two pumps
- Additional Capacity Port for expandable water containment

### T40SP- Side Pod Expansion Tank



- 40 lbs, Dimensions: L: 32", W: 24", H: 20"
- Side-nesting Expansion Tank connects to either side of the T40F or T75F Filter Tank
- Adds an additional 10 gallons of water-in-motion reserve when connected to the T75F Filter Tank
- The top of the Side Pod rests 4" below ground level allowing it to be placed beneath lawn, ground cover or walkways.
- A 4" connection on both sides for connecting to a Filter Tank or additional Side-Pod Tanks
- Includes vented cap. The Air Vent allows water to flow quickly in and out of the tank.

### T75F- Filter Tank



- 72 lbs, Dimensions: L: 35", W: 36", H: 32"
- A 6" intake port handles flow rates up to 200 GPM (12,000 GPH)
- 75 gallon Filter Tank (provides 40 gallons of water-in-motion reserve @ 9" residual water depth)
- Large pumping chamber
- Bolt down integrated lid system
- Convenient filter access (Filter Basket purchased separately)
- Removable Filter Carriage
- Front & back discharge ports for up to four pumps
- Front and back additional capacity ports for expandable water containment

### T165XP- Xtended Pod Expansion Tank



- 156 lbs, Dimensions: L: 63", W: 37", H: 32"
- Four 6" coupling ports for connection to Filter Tanks or additional Expansion Tanks, One 3" overflow port
- Adds an additional 140 gallons of water-in-motion reserves when connected to the T390F Filter Tank
- Adds an additional 95 gallons of water-in-motion reserve when connected to the T75F Filter Tank
- Reinforced domed lid can be covered by the landscape
- Lid vented for pressure equalization to allow easy fill and pump down of stored water
- Includes coupling pipe & fittings

### T390F- Filter Tank



- 256 lbs, Dimensions: L: 70", W: 51.5", H: 48"
- 6" / 10" combination intake port handles flow rates up to 700 GPM (42,000 GPH)
- 390 gallon Filter Tank (provides 270 gallons of water-in motion reserve @ 9" residual water depth)
- Accepts interchangeable skimmers
- Large pumping chamber. Bolt down integrated lid system
- Convenient filter access (Filter Baskets purchased separately). Removable Filter Carriage
- Front & back discharge ports for up to four pumps
- Front and back additional capacity ports for expandable water containment

### Fixed Skimmers



Low Profile Fixed Skimmers allow precise adjustment of the water level and are nearly invisible at the pools edge. An eccentric coupling provides fine tuning of the skimmer height to accommodate increased flows, and the un-tapered skimmer design allows the skimming edge to be incrementally trimmed as needed. Optional drain port allows for water to drain completely into tank when pump is shut off.

### Door Skimmers



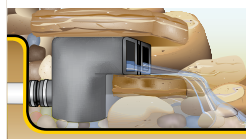
The door skimmer rests inside the liner and is designed to disappear into the ponds edge. The skimmer door self-adjusts to fluctuating water levels. Floating debris in the pond is swept through the skimmer door and into the filter basket inside the filter tank. It accommodates fluctuating water levels and pumping volumes. Allows for bottom draw in pond through a connection to Bottom Draw Disk.

### In Wall Skimmers



There are 2 types of stainless steel skimmers. For use in elevated pools the S5 in-Wall Skimmer exits out of the bottom and provides a strong low profile design for 10" or wider concrete walls. In installations where the top of the Filter Tank is level with the pool edge, the S6 In-Wall Skimmer exits out the back for a same level connection with the Filter Tank and provides a strong narrow design for 10" or wider concrete walls.

### Waterfall Starter



Filtrific Waterfall Starter's innovative rock-bearing design allows only the natural elements and flowing water to be seen. Surround the Waterfall Starter with rock to create a completely natural looking water feature. Invert the Waterfall Starter for a low profile start to a waterfall or stream. Recommended flow up to 9600gph. 3" Connection

Part Number	Description
S44	80 GPM Fixed Skimmer (fits 4" pipe)
S64	80 GPM Fixed Skimmer (fits 4" pipe)
S66	160 GPM Fixed Skimmer (fits 6" pipe)
S44D	80 GPM Door Skimmer (fits 4" pipe)
S64D	80 GPM Door Skimmer (fits 4" pipe)
S66D	160 GPM Door Skimmer (fits 6" pipe)
S5	Stainless Steel In-Wall Down Drop Skimmer (fits 3" pipe)
S6	Stainless Steel In-Wall Skimmer (fits 4" pipe)
WS1	Waterfall Starter

# SIMPLE POND SYSTEM



## VANISHING PACKS



Part Number	Description	Contents	Water Containment	Water In Motion Reserve
VP-05	Vanishing Pack 5	T40F + CPX	40 Gal.	20 Gal.
VP-09	Vanishing Pack 09	T40F + T40SP + RC-44LL + CPX	80 Gal.	60 Gal.
VP-10	Vanishing Pack 10	T75F + CP1	75 Gal.	40 Gal.
VP-10HF	Vanishing Pack 10 High Flow	T75F + CP2	75 Gal.	40 Gal.
VP-15	Vanishing Pack 15	T40F + 2x-T40SP + RC-44LTL + CPX	120 Gal.	100 Gal.
VP-20	Vanishing Pack 20	T75F + T40SP + RC-44LL + CP1	115 Gal.	80 Gal.
VP-20HF	Vanishing Pack 20 High Flow	T75F + T40SP + RC-44LL + CP2	115 Gal.	80 Gal.
VP-25	Vanishing Pack 25	T75F + 2x-T40SP + RC-44LTL + CP1	155 Gal.	120 Gal.
VP-30 ***	Vanishing Pack 30	T75F + T165XP + CP1	240 Gal.	135 Gal.
VP-70 ***	Vanishing Pack 70	T390F + CP3A	390 Gal.	270 Gal.
VP-100 ***	Vanishing Pack 100	T390F + T165XP + CP3A	555 Gal.	410 Gal.

## POND PACKS

Part Number	Description	Contents	Water Containment
PP-05	Pond Pack 5	T40F + CPY	40 Gal.
PP-10	Pond Pack 10	T75F + CP5	75 Gal.
PP-10HF	Pond Pack 10 High Flow	T75F + CP6	75 Gal.

\*\*\* Please Note: Additional Freight Charges May Apply

## Optional Accessories

### SH1 & SH2



A recessed top supports large or small rock overlays and two front and back skimming windows handle large leaves and debris.

### CD1



The Bottom Draw Disk connects directly to the S44D, S64D, or S66D and removes small organic debris with a maximum flow rate of 15gpm.

### SG1 & SG2



Use the stainless steel skimmer Grate for applications with smaller organic debris. Extension risers can be added to lift the grate off the skimmer and allow larger debris to pass below the grate.

### K5 & K6



The Auto-Fill Assembly connects to the overflow port on the Filter Tank and can be positioned according to the application at either a high or low level in the Filter Tank.

### RISER



Extension risers elevate the grate 1-3/8" to accommodate larger debris. Four self-tapping screws secure the riser to the skimmer. Top bolts fasten the grate to the top of the risers allowing convenient internal access of the skimmer

### UV57-FH



UV light is a popular and effective way of turning green water into clear water. It contains a 57watt UV lamp transformer, 22" housing with 2" connection pipe and flex connectors, 14ft cord and 2" check valve.

Part Number	Description
SH1	Skimmer Hood (for S44, S64 Skimmers)
SH2	Skimmer Hood (for S66 Skimmer)
SG1	Skimmer Grate (for S44, S64 Skimmers)
SG2	Skimmer Grate (for S66 Skimmer)
CD1	Bottom Draw Disk
UV57-FH	Vault and 57 Watt UV Clarifier
K5	In-Tank Mechanical Auto Fill (T40 and T75)
K6	In-Tank Mechanical Auto Fill (T390)
SGRK1	Riser for SG1
SGRK2	Riser for SG2